



AL NOOR AL HUDA TRADING & CONTRACTING

TEL: 44353738, MOB: 66445912, FAX: 44362358

C.R. NO: 49223, P.O. BOX: 31591

DOHA - QATAR

E-mail: sales@alnooralhuda.com

Web: www.alnooralhuda.com



ABOUT US

AL-NOOR AL-HUDA is one of the familiar name in Building Material Trading field in Qatar more than a decade. Provide quality service to project & the local market requirement. We offering wide range of Plumbing, Electrical, Safety and Hardware items for Construction needs. Al Noor Al Huda Trading Contracting Est was founded in the year 2000. You can at the most competitive price in the market. Our promise is Accuracy, Quality, Durability. We offer you quality assured products of international standards from reputed brands.

ISO 9001:2015 CERTIFIED

To fulfill our commitment to adhere to global standards. Al Noor-Al Huda has been ISO certified. We are further committed to achieving customer satisfaction using quality procedures which are operated to meet or exceed the requirements of ISO 9001.

QUALITY ASSURANC

Al Noor-Al Huda Company is committed to excellence in quality, dedicating substantial resources to ensure the highest standards in our products and services across Qatar and the broader Middle East. With a wealth of experience since our inception, our goal is to continually enhance and maintain superior quality in our deliverables to the construction industry, reflecting our unwavering commitment to excellence.



SERVICE

Al Noor-Al Huda Company is dedicated to providing excellent value for money, ensuring customer satisfaction by meeting agreed-upon requirements for goods and services at specified prices. Committed to continuous improvement, we strive to enhance our services consistently, meeting clients' needs and delivering solutions that inspire pride and satisfaction.

WHY CHOOSE AL NOOR AL HUDA ?

Al Noor-Al Huda Company, operating for over a decade in Doha, Qatar, is the preferred supplier for building materials and sanitary ware. As a market leader in construction, we've earned satisfaction from customers, contractors, and consultants. Representing renowned international brands like Pegler Valves, Yorkshire Tubes, Stuart Turner Pumps, Thermex, Ariston water heaters, we ensure quality and efficiency, making us a trusted choice in the construction sector.





01 COPPER PIPE AND FITTINGS , COMPRESSION FITTINGS & CHROME FITTINGS

- ▶ COPPER PIPE AND FITTINGS - CONEX UK , BANNINGER
- ▶ COPPER NS FITTINGS - WEDNESBURY UK , MULLER UK , YORKSHIRE UK , IBP UK , CHINA
- ▶ COPPER COMPRESSION FITTINGS
- ▶ COPPER NON SOLDING FITTINGS
- ▶ COPPER SOLDING FITTINGS

02 PVC HIGH PRESSURE PIPES AND FITTINGS

FITVALF TURKEY , HYDRODIF TURKEY , EFFAST ITALY , CEPEX SPAIN , TECHNO PLAST ITALY , COMER ITALY

03 GI , MI , MS , CI PIPES AND FITTINGS

- ▶ AL JAZEERA , APPOLO (PIPE BRAND)
- ▶ BIS THAILAND , CHINA

04 GATE VALVE , ANGLE VALVE , FOOT VALVE FLOAT VALVE , NRV , BIB TAP

PEGLER UK

05 PVC DRAINAGE PIPES AND FITTINGS

Q PLAST , QADDCO , HEPWORTH , UNIPLAST

- ▶ SOLVENT TYPES FITTINGS
- ▶ RUBBER TYPES FITTINGS

06 PPR PIPE AND FITTINGS

SBS TURKEY , BR GERMANY , SUPREME INDIA , ISN THERSM TUREKY , DIZAYN TURKEY

07 ELECTRICAL ITEMS

TENBY , OSRAM , VATUSN , SELEX , PHILIPS , SCHINDLER ,MK ,SINAR , LEGREND , KDK, PANASONIC, HAGER , EATON , ABB

- ▶ 1. Wiring materials (cables, wires, conduits)
- ▶ 2. Circuit breakers and fuse boxes
- ▶ 3. Electrical outlets and switches
- ▶ 4. Light fixtures (including bulbs or LED lights)
- ▶ 5. Distribution boards or panels
- ▶ 6. Junction boxes
- ▶ 7. Electrical panels for HVAC systems
- ▶ 8. Surge protectors
- ▶ 9. Grounding materials (ground rods, grounding clamps)
- ▶ 10. Electrical meters (for monitoring usage)
- ▶ 11. EXHAUST FANS

08 SANITARY ITEMS

ACSENT , ASAHI , SUNDEX , KOREA , ASCENT , SUNDEX , STERORA , GROHE, MILANO , HSH , ARMAMIX , BLUE CAT , WATER TECH MALASYIA ,Mr. Toilet , Eurx ,

- ▶ 1. Toilets (flush tanks, toilet bowls)
- ▶ 2. Bathroom sinks
- ▶ 3. Faucets (for sinks, showers, and bathtubs)
- ▶ 4. Showerheads and hand showers
- ▶ 5. Bathtubs or shower enclosures
- ▶ 6. Bathroom accessories (towel bars, toilet paper holders, soap dishes)
- ▶ 7. Water closets (WC) with cisterns
- ▶ 8. Urinals
- ▶ 9. Grease traps (for commercial kitchens)
- ▶ 10. Wc Seat cover , Flush tank items
- ▶ 11. Bidets
- ▶ 12. Bathroom mirrors
- ▶ 13. Shower curtains

09 ELECTRICAL WATER HEATER

THERMEX RUSSIA , FEROLI ITALY , MILANO , SANDEMAN ITALY , ARISTON ITALY , AO SMITH

10 WATER PUMPS / SUBMERSIBLE PUMPS / CIRCULATION PUMP

PERDOLLO ITALY , COSMO INDIA , CALPEDA ITALY , GRUNDFOS UK , STUART UK , ESPA SPAIN , MILANO , RR CHINA , SUNDEX , MAAT CHINA

11 PAINT

HEMPEL , JOTUN ORYX , MAPIE , EBM , MAS , ROBSON,

12 SAFETY ITEMS

3M, HONEYWELL, MSA SAFETY, DUPONT, BODY GUARD, KIMBERLY-CLARK PROFESSIONAL, BREAKER, DRAEGER, DELTA PLUS GROUP, LEVANTE

- Safety Helmet
- Safety glasses or goggles
- High-visibility vests or jackets
- Steel-toe boots or safety shoes
- Gloves (mechanical, electrical, chemical-resistant)
- Ear protection (earplugs or earmuffs)
- Respirators (for dust, fumes, or chemicals)
- Fall protection equipment (harnesses, lanyards, lifelines)
- Safety harnesses for working at heights
- D. Safety barricades or barriers
- First aid kits
- Fire extinguishers
- Emergency eyewash stations
- Safety signs and labels (warning signs, hazard labels)
- Lockout/tagout devices (for equipment isolation)
- Safety Traffic cone
- Face Mask

13 OTHER ITEMS

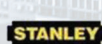
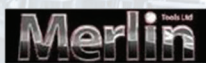
3M, HONEYWELL, MSA SAFETY, DUPONT, BODY GUARD, KIMBERLY-CLARK PROFESSIONAL, BREAKER, DRAEGER, DELTA PLUS GROUP, LEVANTE

- DOOR LOCKS & FITTINGS , DOOR CYLINDERS , HINGES - DEVON , GODREJ , NATIONAL
- FASTNERS
- STEEL CABINET AND MATTRESS SET
- SS FITTINGS AND FASTNERS
- SELF TAPPING SCREW - TIMCO , PATTI , NATIONAL
- MACHINE SCREW
- WOOD SCREW
- FISHER PLUG

14 TOOLS

- POWER TOOLS AND HAND TOOLS - CLARKE ,STANLEY , STARRET , KNIPEX , JUBILEE , MAKITA, DEWALT, BOSCH, TRUMPH ENGLAND, ARALDITE , ECLIPSE, BAND - IT, ACORN UK, INGCO , TOTAL
- WATER TANKS
- RUBBER INULATION
- ADHESIVES - PARABOND , TANGIT , WELDON , SUPER GLUE
- WATER COOLER
- CHANNL GRATINGS
- ROAD GULLY GRATINGS
- CIRCULAR SEAL SOILD TOP
- SINGLE SEAL SOILD TOP
- SOILD TRIANGULAR COVER
- GULLY GRATING DISHED TYPE

- PLYWOOD
- BALCK CEMENT
- WHITE WOOD
- GYPSUM POWDER.
- TILE GLUE
- TILE GROUT
- WOOD POLISH
- PAINT BRUSH & ROLLERS
- GARDEN HOSES
- FLEXIBLE HOSE – SUNDEX , AGRIFLEX SPAIN , CHINA
- PRESSURE CONTROLS – COSMO INDIA , STUART UK , ESPA SPAIN , GRANDFOSE UK
- PRESSURE VESSEL – VAREM ITALY , WATES , REFLEX , KITZ
- PIPE SUPPORTING CLAMPS
- SUPPORTING CHANNELS
- ANCHOR BOLTS
- BALCK TAPE
- TEFLON.
- DUCT TAPE
- MASKING TAPE – REXX , DELTA , WALTER ,3M
- ALUMINUM TAPE
- CLEAR TAPE
- DENSO TAPE
- ELECTRICAL INSULATION TAPE
- CUTRAIN ITEMS
- TESTING PLUG
- FLOAT SWITCH
- TILES
- GYPSUM BOARD
- WELDED MESH
- PVC AND SS FLOOR DRAIN COVER
- MANHOLE COVER
- GI SHEET
- ELECTRICAL CABINTE
- WATER METER CABINET
- WATER FILTER & CANDLES – ATLAS ITALY , DOULTON UK , SUNDEX , SUFSAFE
- SHOWEL
- JIG SAW
- ANGLE GRINDER
- DIAMOND DRILLS / RINGS
- PLIERS
- TOOL SET
- HAMMERS
- SPANNERS
- SCREW DRIVERS & BITS
- CABLE CUTTERS & CRIMPING TOOLS
- RUBBER GASKET & SHEETS



COPPER SOLDERING FITTING

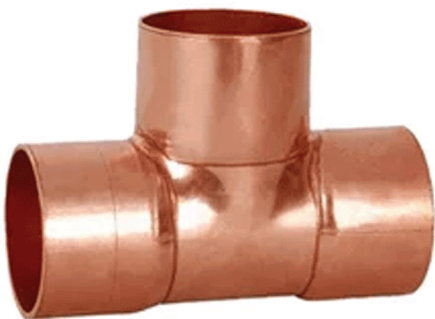
Discover efficiency with our Copper Soldering Fittings. Engineered for precise connections through soldering, these fittings offer a secure and durable seal. Elevate your plumbing projects with ease of installation and lasting performance. Choose reliability with our premium Copper Soldering Fittings.



Yorkshire

COPPER NS FITTINGS

Elevate your projects with our Copper NS Fittings, featuring top brands like Wednesbury, Muller, Yorkshire, IBP, and a high-quality selection from China. Crafted for precision and durability, these fittings ensure reliable connections, setting the standard for excellence in plumbing and construction. Choose assurance and longevity for your projects with our trusted collection.



Yorkshire

COPPER COMPRESSION FITTINGS

Introducing our Copper Compression Fittings, a testament to quality and reliability in plumbing solutions. These fittings, meticulously crafted for precision, ensure secure and leak-free connections. Elevate your projects with confidence, as our Copper Compression Fittings provide a robust foundation for plumbing systems, delivering durability and performance that stands the test of time



Conex | Bänninger



COPPER PIPE

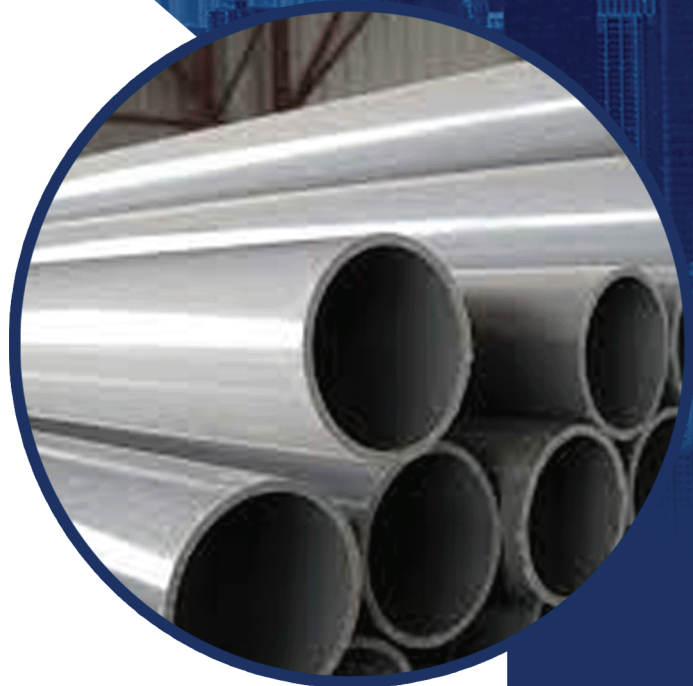
Yorkshire brand is dedicated to the manufacture of copper tubes to national and international standards used extensively in many fields of building construction and throughout the general and Civil engineering industries. Mueller industry is a global leader of premium quality tube and pipe for plumbing, air conditioning, refrigeration and other applications.



HIGH PRESSURE PIPES

Qualities, including lightness, ease of transport, simplicity of jointing, speed of laying and cost effective installation have enabled UPVC Pipe Systems to make a dynamic contribution to water engineering in the United Kingdom and Overseas. The unique properties of UPVC make Hepworth Watermain pipes, joints and bends an ideal choice where potable water or other liquids are transported under pressure.

Hepworth products are manufactured to British Standard Specifications under the supervision of the Kitemark Approval Scheme. Hepworth holds 13 Kitemark Licences which indicates the stringent levels of quality control in operation. At Hepworth we do not merely pay lip service to quality, it is engineered into our products.



Hepworth

PVC HIGH PRESSURE PIPES AND FITTINGS

Introducing our PVC High-Pressure Pipes and Fittings, featuring a curated selection of leading brands such as Fitvalf (Turkey), Hydrodif (Turkey), Effast (Italy), Cepex (Spain), Techno Plast (Italy), and Comer (Italy). Crafted for durability and performance, these components ensure reliable connections in high-pressure applications. Elevate your projects with the assurance of quality and precision offered by these renowned brands, setting a benchmark for excellence in the world of PVC piping solutions.



CEPEX



GI, MI, MS, CI PIPES AND FITTINGS

Experience durability and reliability with our GI, MI, MS, and CI Pipes and Fittings, featuring Al Jazeera and Appolo for pipes, and BIS (Thailand) and China for fittings. Crafted for precision and strength, these components ensure efficient plumbing systems. Elevate your projects with the trusted quality of Al Jazeera and Appolo pipes, coupled with the excellence of BIS (Thailand) and China fittings, setting a benchmark for reliability in the industry.



**GATE VALVE,
 ANGLE VALVE,
 FOOT VALVE,
 FLOAT VALVE,
 NRV,
 BIB TAP**

PVC DRAINAGE PIPES AND FITTINGS

Discover versatility in drainage solutions with our PVC Drainage Pipes and Fittings, offering both Solvent Types and Rubber Types fittings. With brands like Q Plast, Qaddco, Hepworth, and Uniplast, our range ensures efficient wastewater management for diverse applications. Whether you prefer the secure seal of Solvent Types fittings or the flexibility of Rubber Types fittings, our products guarantee durability and reliability. Elevate your drainage systems with our comprehensive selection, trusted by professionals for superior performance and longevity in any project.



PPR PIPE AND FITTINGS

Discover top-tier PPR Pipes and Fittings from SBS (Turkey), BR (Germany), Supreme (India), ISN Thersm (Turkey), and Dizayn (Turkey). Crafted for durability and efficiency, these products ensure leak-free connections for diverse plumbing needs. Elevate your projects with trusted quality and innovation from leading brands in the industry.



ELECTRICAL ITEMS

- Wiring materials (cables, wires, conduits)
- Circuit breakers and fuse boxes
- Electrical outlets and switches
- Light fixtures (including bulbs or LED lights)
- Distribution boards or panels
- Junction boxes
- Electrical panels for HVAC systems
- Surge protectors
- Grounding materials (ground rods, grounding clamps)
- Electrical meters (for monitoring usage)

Quality electrical essentials from top brands like Tenby, Osram, Vatusn, Selex, Philips, Schnidler, MK, Sinar, Legrand, KDK, Panasonic, Hager, Eaton, and ABB. Featuring a comprehensive range of products for seamless installations, ensuring reliable performance and safety in every application.



SANITARY ITEMS

- Toilets (flush tanks, toilet bowls)
- Bathroom sinks
- Faucets (for sinks, showers, and bathtubs)
- Showerheads and hand showers
- Bathtubs or shower enclosures
- Bathroom accessories (towel bars, toilet paper holders, soap dishes)
- Water closets (WC) with cisterns
- Urinals
- Grease traps (for commercial kitchens)
- Wc Seat cover , Flush tank items
- Bidets
- Bathroom mirrors
- Shower curtains

Elevate your bathroom experience with top-quality sanitary items sourced from leading brands including Ascent, Asahi, Sundex, Korea, Sterora, Grohe, Milano, HSH, Armamix, Blue Cat, Blue Cat , Ascent, Steorra, Mr. Toilet, and Eurx. From toilets and sinks to faucets, showerheads, and bathroom accessories, our comprehensive range ensures functionality, durability, and style for all your bathroom needs.



ELECTRICAL WATER HEATER

Discover superior performance and reliability in water heating with our selection of Electrical Water Heaters, featuring renowned brands such as Thermex (Russia), Feroli (Italy), Milano, Sandeman (Italy), Ariston (Italy), and AO Smith. Crafted with precision engineering and cutting-edge technology, these heaters ensure efficient heating for your home or business. Elevate your comfort with trusted quality and innovation from our range of electrical water heaters.



WATER PUMPS / SUBMERSIBLE PUMPS / CIRCULATION PUMP



Introducing our comprehensive range of water pumps, including submersible and circulation pumps, featuring top brands like Pedrollo (Italy), Cosmo (India), Calpeda (Italy), Grundfos (UK), Stuart (UK), Espa (Spain), Milano, RR (China), Sundex, and Maat (China). Crafted with precision and reliability, our pumps ensure efficient water management for residential, commercial, and industrial applications. Elevate your water distribution systems with trusted quality and performance from our diverse selection of water pumps.



PAINT

Discover a spectrum of vibrant colors and lasting finishes with our premium paint selection, featuring top brands such as Hempel, Jotun, Oryx, Mapie, EBM, MAS, and Robson. Crafted for durability and aesthetic appeal, our paints provide superior coverage and protection for all your surfaces. Elevate your painting projects with trusted quality and innovative formulations from our diverse range of paint brands.



SAFETY ITEMS

Ensure workplace safety with our comprehensive range of safety items:

- Safety Helmet
- Safety glasses or goggles
- High-visibility vests or jackets
- Steel-toe boots or safety shoes
- Gloves (mechanical, electrical, chemical-resistant)
- Ear protection (earplugs or earmuffs)
- Respirators (for dust, fumes, or chemicals)
- Fall protection equipment (harnesses, lanyards, lifelines)
- Safety harnesses for working at heights
- Safety barricades or barriers
- First aid kits
- Fire extinguishers
- Emergency eyewash stations
- Safety signs and labels (warning signs, hazard labels)
- Lockout/tagout devices (for equipment isolation)
- Safety Traffic cone
- Face Mask



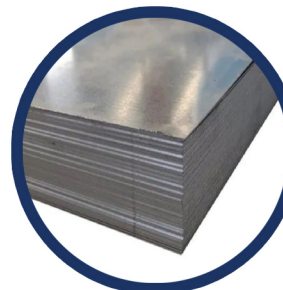
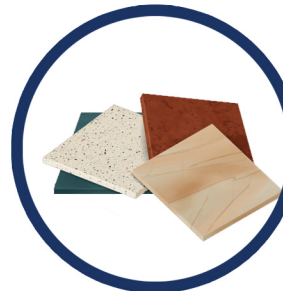
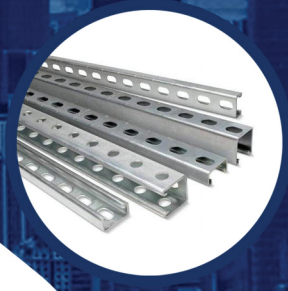
OTHER ITEMS

- DOOR LOCKS & FITTINGS, DOOR CYLINDERS , HINGES
- FASTNERS
- STEEL CABINET AND MATTRESS SET
- SS FITTINGS AND FASTNERS
- SELF TAPPING SCREW
- MACHINE SCREW
- WOOD SCREW
- FISHER PLUG
- TOOLS: POWER TOOLS AND HAND TOOLS
- PPR MACHINES
- WATER TANKS
- RUBBER INULATION
- ADHESIVES
- WATER COOLER
- CHANNL GRATINGS
- ROAD GULLY GRATINGS
- CIRCULAR SEAL SOILD TOP
- SINGLE SEAL SOILD TOP
- SOILD TRIANGULAR COVER
- GULLY GRATING DISHED TYPE
- PLYWOOD
- BALCK CEMENT
- WHITE WOOD
- GYPSUM POWDER
- TILE GLUE
- TILE GROUT
- WOOD POLISH
- PAINT BRUSH & ROLLERS
- GARDEN HOSES
- FLEXIBLE HOSE
- PRESSURE CONTROLS
- PRESSURE VESSEL



OTHER ITEMS

- PIPE SUPPORTING CLAMPS
- SUPPORTING CHANNELS
- ANCHOR BOLTS
- BALCK TAPE
- TEFLON.
- DUCT TAPE
- MASKING TAPE - **REXX, DELTA, WALTER,3M**
- ALUMINUM TAPE
- CLEAR TAPE
- DENSO TAPE
- ELECTRICAL INSULATION TAPE
- CUTRAIN ITEMS
- TESTING PLUG
- FLOAT SWITCH
- TILES
- GYPSUM BOARD
- WELDED MESH
- PVC AND SS FLOOR DRAIN COVER
- MANHOLE COVER
- GI SHEET
- ELECTRICAL CABINTE
- WATER METER CABINET
- WATER FILTER & CANDLES
- SHOWEL
- JIG SAW
- ANGLE GRINDER
- DIAMOND DRILLS / RINGS
- PLIERS
- TOOL SET
- HAMMERS
- SPANNERS
- SCREW DRIVERS & BITS
- CABLE CUTTERS & CRIMPING TOOLS
- RUBBER GASKET & SHEETS





AL NOOR AL HUDA TRADING & CONTRACTING

TEL: 44353738, MOB: 66445912, FAX: 44362358

C.R. NO: 49223, P.O. BOX: 31591

DOHA - QATAR

E-mail: sales@alnooralhuda.com

Web: www.alnooralhuda.com

Comfortable Fittings Than Your Thought